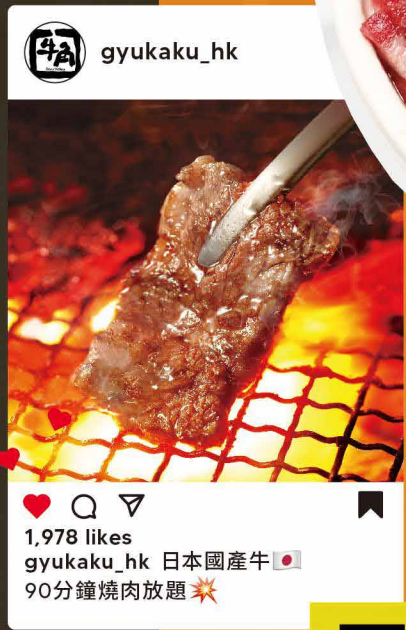


ON FIRE! JAPANESE BEEF & SEAFOOD YAKINIKU ALL-YOU-CAN-EAT



日本焼肉専門店  
食べ放題実施店

GYU-KAKU  
GYU-KAKU  
GYU-KAKU  
GYU-KAKU  
GYU-KAKU  
GYU-KAKU  
GYU-KAKU  
GYU-KAKU  
GYU-KAKU  
GYU-KAKU



150品起

# 好評開催!

## 日本國產牛90分鐘燒肉放題

ON FIRE! 90 MINS JAPANESE BEEF & SEAFOOD YAKINIKU ALL-YOU-CAN-EAT

任食 > 日本國產牛、和牛、海鮮 + 無料追加牛角飯等多款人氣單品

	星期一至四	五、六、日、公眾假期及其前夕	小童
早割	\$388	\$428	\$248
正價	\$428	\$478	





日本燒肉專門店  
食べ放題実施店

# 好評開催! 150品起

## 日本國產牛90分鐘燒肉放題

ON FIRE! 90 MINS JAPANESE BEEF & SEAFOOD YAKINIKU ALL-YOU-CAN-EAT

NEW



日本國產牛頸脊  
Japanese Chuck Flap

NEW

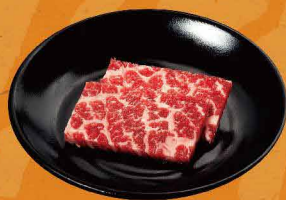


日本國產牛肩脊肉  
Japanese Chuck Roll

NEW



壺漬日本國產牛  
Japanese Beef with House Miso



美國SRF安格斯  
和牛肩脊肉  
U.S. SRF Angus Wagyu Chuck Roll



王樣!美國SRF安格斯  
和牛牛肋條  
Premium U.S. SRF Angus Wagyu Karubi



二本爪(蟹鉗)  
Crab Claw



王樣!虎蝦  
Premium Tiger Prawn

### 精選推介 HOT PICKS

澳洲和牛:前胸肉、赤身嫩肩里肌、一口牛  
AUS Wagyu: Skirt, Top Blade, Cube

海鮮:牛油廣島蠔、塩味牛油帶子、燒池魚(配蘿蔔蓉柚子醋)  
Seafood: Hiroshima Oyster with Butter, Scallop with Shio Butter, Horse Mackerel (Aji Fish)(with Ponzu & Grated Radish)

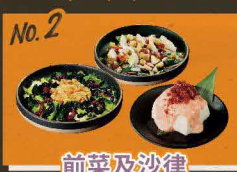
和牛:牛板腱、SRF肩脊肉、壺漬牛肋條  
Wagyu: Oyster Blade, SRF Chuck Roll, Karubi with House Miso

王樣:澳洲/美國和牛扒、日本熊本豚腩肉、魷魚  
Premium: AUS/U.S. Wagyu Steak, Japanese Kumamoto Pork Belly, Squid

無料追加多款人氣單品  
Enjoy a variety of popular items for free



No.1 溫泉玉子牛角飯



No.2 前菜及沙律



No.3 飲品

追加優惠(每位)  
Additional (Per Person)

生啤放題 Draft Beer All-you-can-drink	+\$33
生啤+「白雪」清酒放題 Draft Beer & Shirayuki Sake All-you-can-drink	+\$48
生啤、清酒及果實酒放題 Draft Beer, Sake & Liqueur All-you-can-drink	+\$68

18:00 前入座可享早割優惠 | 早割優惠不可與其他折扣或推廣優惠同時使用(包括但不限於 KABU PASS 會員折扣、KABU POINT 儲分及電子優惠券,特別註明除外) | 放題時間於入座計時(完結前 30 分鐘最後加單) | 如需延長 30 分鐘,每位加收 \$80(小童\$50) | 同樣客人必須點同一級放題 | 只限堂食,剩餘食物每 100 克收取 \$20 食材費 | 身高不足 90 厘米幼童免費,90 至 140 厘米按小童價計算 | 可供應產品或因供應量、使用量及季節而變動。如有售完,恕不另行通知 | 收取加一服務費 | 圖片只供參考

Seated before 18:00 to enjoy Early Bird Discount | Early Bird Offers cannot be used in conjunction with any other discounts or promotional offers(including but not limited to KABU PASS member discounts, earning KABU POINTS, and e-coupons, unless otherwise specified) | Dining time is counted after seated. Last order should be made 30 minutes before the meal ends | Extra fee of \$80 per person(\$50 per child) will be charged for every 30 minutes extension | Same All-You-Can-Eat Course is required to be ordered per table | For dine in only. Any wastage will be charged \$20 per 100g | Toddlers under 90cm are free and children between 90cm and 140cm are charged at the child price | Products variety may vary due to stock, usage and season. No prior notice will be given if any products are sold out | Subject to 10% service charge | Photos are for reference only